

TCP/IP Critical for VSE Users

- ☑ For most customers it is THE network interface
- ☑ Software and concepts are complicated
- ☑ VSE systems support wears many hats and cannot specialize
- ☑ Can't afford to be down
- ☑ Have tried almost anything to fix problems...



Copyright © 2011 illustro Systems International, LLC



Exciting News for VSE Customers

- New software aimed at easing the pain
- De
- gr
- Ex
- Re
- interface





Latest
Release 2.0E

New IPV6
Support




Copyright © 2011 illustro Systems International, LLC

WAVV2010-2





- Comprehensive monitoring tool for TCP/IP for VSE – (IBM,BSI or CSI)
- Revolutionary interface using AJAX/Web design
 - No 3270 interface
 - Important because *any* network personnel can use
 - First mainframe product in the world to feature *only* a 100% AJAX interface




Copyright © 2011 illustro Systems International, LLC

WAVV2010-3



- Provides live, dashboard interface for all network activity
- Alert interface for notification of critical events
- Retrospect™ feature replays archived data
- Complete, formatted packet trace facility for diagnostic use
- TCP/IP Command Interface



Copyright © 2011 illustro Systems International, LLC

WAVV2010-4

z/IPMon
SEE WHAT YOU'VE BEEN MISSING.™

Monitor for Alerts

Time of display (live or Retrospect™)

Expandable Tree Structure

Drill down into any field

Dashboard

Network Interfaces (View Chart)

Network Interface	Total Bytes	Total Frames	TELNET Bytes/Sec	FTP Bytes/Sec	HTTP Bytes/Sec	Total Bytes	Total Frames
CTC VSE 2.6 to VM (IN)	0	0	0	0	0	0	0
CTC VSE 2.6 to VM (OUT)	0	0	0	0	0	0	0
CTC VSE 3.1 to VM (IN)	100K	210	0	0	0	100K	210
CTC VSE 3.1 to VM (OUT)	0	0	0	0	0	0	0
QDIO VSE 3.1 to VM (IN)	0	0	0	0	0	0	0
QDIO VSE 3.1 to VM (OUT)	0	0	0	0	0	0	0
BIS QDIO stack (IN)	0	0	0	0	0	506K	81K
BIS QDIO stack (OUT)	0	0	0	0	0	271K	6.3K

Network Interface: CTC VSE 3.1 to VM (View Network Interface Details)

TCP Applications (View Chart)

Application	Port	Bytes/Sec	Percent Retransmits	Bytes/Sec	Percent Retransmits
Local FTP (Data)	21	0	00.0%	0	00.0%
Local FTP (Data)	20	0	00.0%	0	00.0%
Secure TELNET	23	0	00.0%	0	00.0%
Non-IPMon	80	0	00.0%	0	00.0%
E-Mail	25	249	00.0%	2	00.0%
Remote printing	515	0	00.0%	2	00.0%
Homework App	1234	0	00.0%	0	00.0%
z/IPMon HTTP	8088	2.87K	00.4%	16.3K	00.4%
Unknown	0	0	00.0%	0	00.0%

Top Hosts

Rank	Host	Bytes/Sec In	Bytes/Sec Out
1	CTC VSE 3.1 to VM	480	2.99K
2	192.168.155.23	614	398
3	192.168.155.118	0	17
4	192.168.155.25	0	14
5	192.168.155.1	0	13
6	192.168.155.56	2.99K	401
7	192.168.155.99	397	182

Protocols (View Chart)

Copyright © 2011 illustro Systems International, LLC

WAVV2010-5

z/IPMon
SEE WHAT YOU'VE BEEN MISSING.™

Most views also available as graphs

Network Interfaces (View Table)

View	Global	Interval	Units	Bytes	Update
CTC VSE 2.6 to VM	0.0%	0.0%	0.0%	0.0%	0.0%
CTC VSE 3.1 to VM	1.0%	1.0%	1.0%	1.0%	1.0%
QDIO VSE 3.1 to VM	1.0%	1.0%	1.0%	1.0%	1.0%
BIS QDIO stack	1.0%	1.0%	1.0%	1.0%	1.0%

Network Interface: CTC VSE 3.1 to VM (View Network Interface Details)

TCP Applications (View Table)

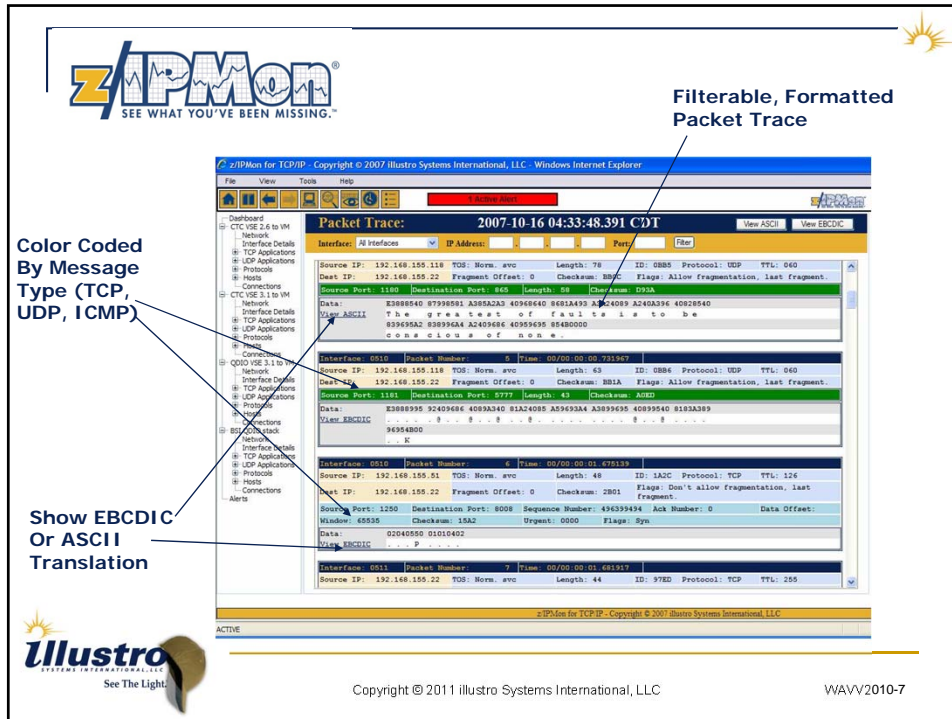
Interval	Bytes	Update
CTC VSE 3.1 to VM	1500	1500
Local FTP (Data)	1500	1500
Local FTP (Data)	1500	1500
Secure TELNET	1500	1500

Top Hosts

Rank	Host	Bytes/Sec In	Bytes/Sec Out
1	CTC VSE 3.1 to VM	41	1.00K
2	192.168.155.118	0	15
3	192.168.155.1	11	14
4	192.168.155.25	0	14
5	192.168.155.1	4.94K	174

Copyright © 2011 illustro Systems International, LLC

WAVV2010-6



z/IPMon
SEE WHAT YOU'VE BEEN MISSING.™

Filterable, Formatted Packet Trace

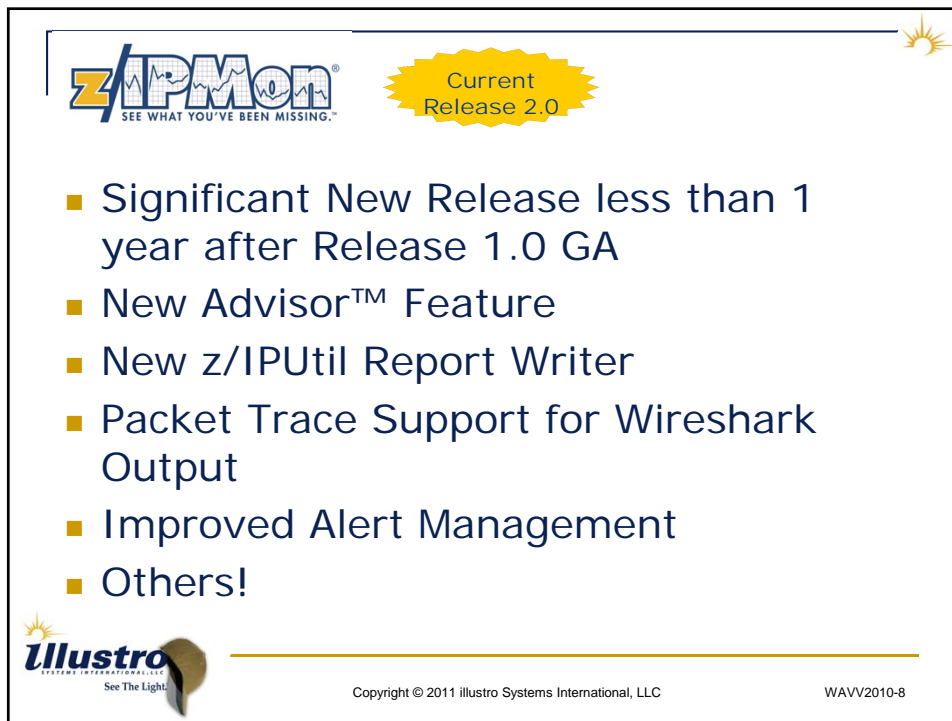
Color Coded By Message Type (TCP, UDP, ICMP)

Show EBCDIC Or ASCII Translation

illustro
SYSTEMS INTERNATIONAL, LLC
See The Light.

Copyright © 2011 illustro Systems International, LLC

WAVV2010-7



z/IPMon
SEE WHAT YOU'VE BEEN MISSING.™

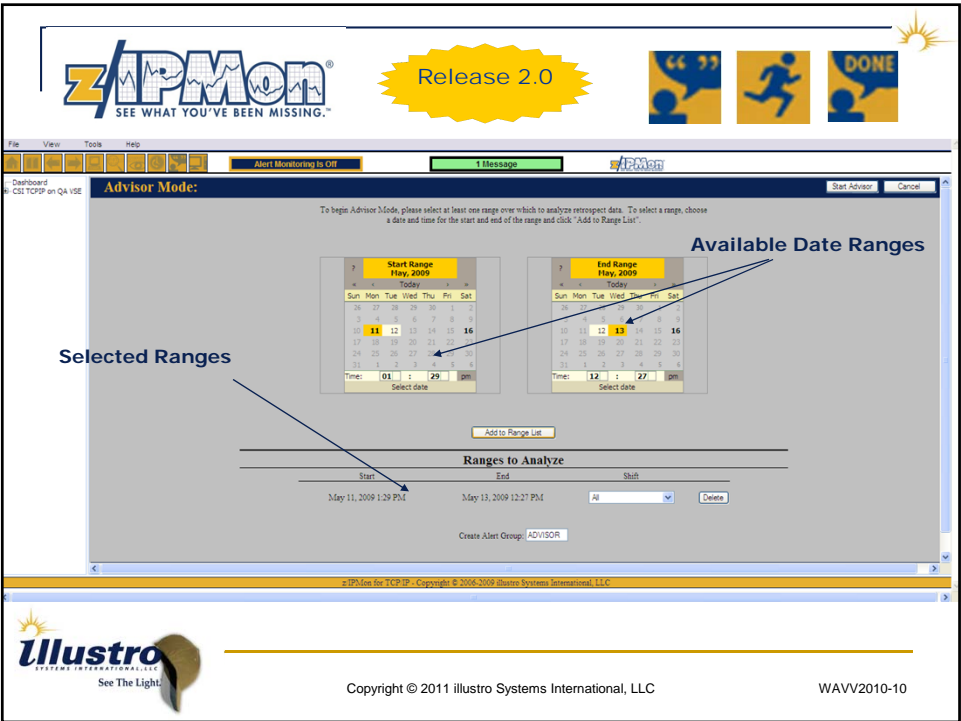
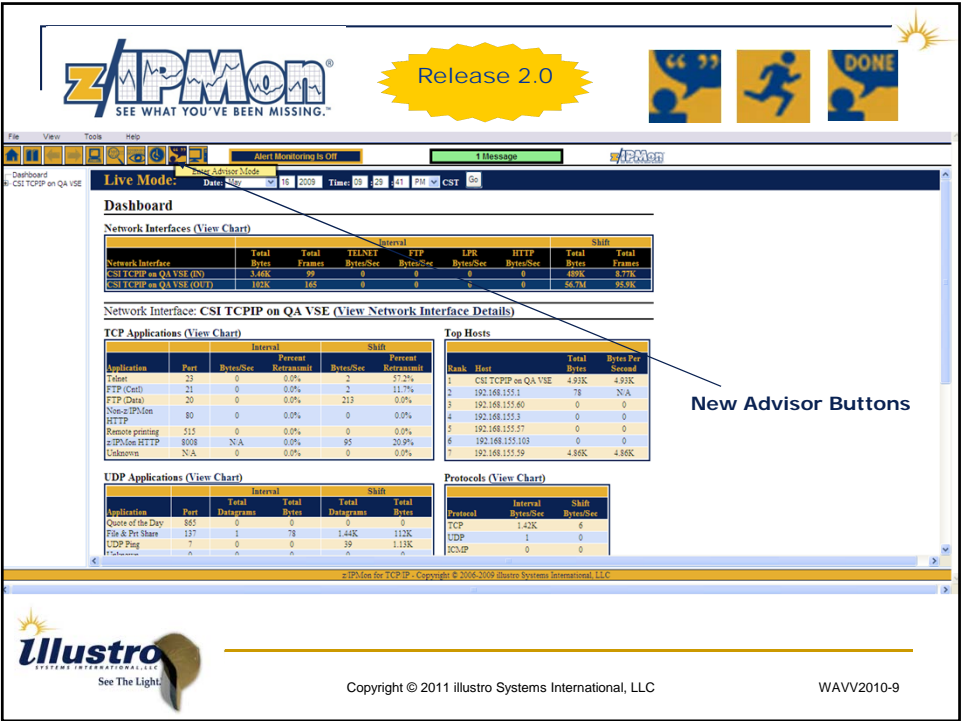
Current Release 2.0


- Significant New Release less than 1 year after Release 1.0 GA
- New Advisor™ Feature
- New z/IPUtil Report Writer
- Packet Trace Support for Wireshark Output
- Improved Alert Management
- Others!

illustro
SYSTEMS INTERNATIONAL, LLC
See The Light.

Copyright © 2011 illustro Systems International, LLC

WAVV2010-8

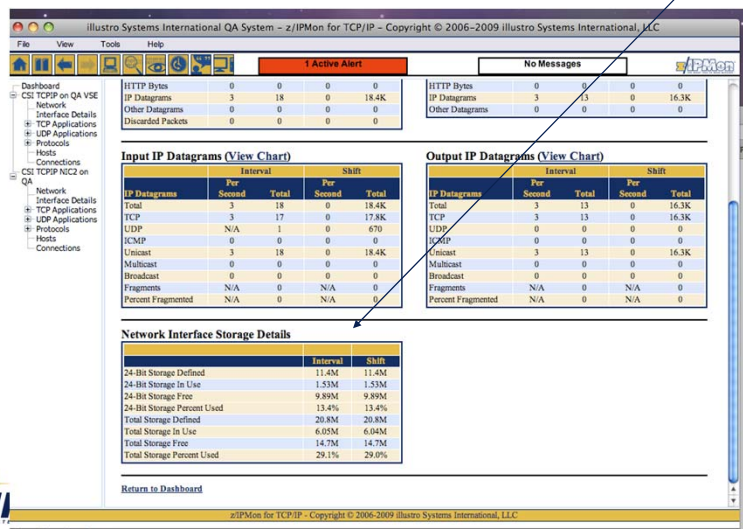




Release 2.0




Monitoring TCP/IP
Storage




The screenshot displays the z/IPMon software interface. At the top, there's a menu bar (File, View, Tools, Help) and a toolbar. Below the toolbar, a sidebar on the left lists navigation options like Dashboard, CSI TCP/IP on QA VSE, Network, Interface Details, TCP Applications, UDP Applications, Protocols, Hosts, and Connections. The main area shows several data tables:

- Input IP Datagrams (View Chart)**: A table with columns for Interval, Shift, Per Second, and Total. It lists statistics for Total, TCP, UDP, ICMP, Unicast, Multicast, Broadcast, Fragments, and Percent Fragmented.
- Output IP Datagrams (View Chart)**: A similar table for output statistics.
- Network Interface Storage Details**: A table showing storage usage for 24-bit storage, including defined, in use, free, and percent used values.

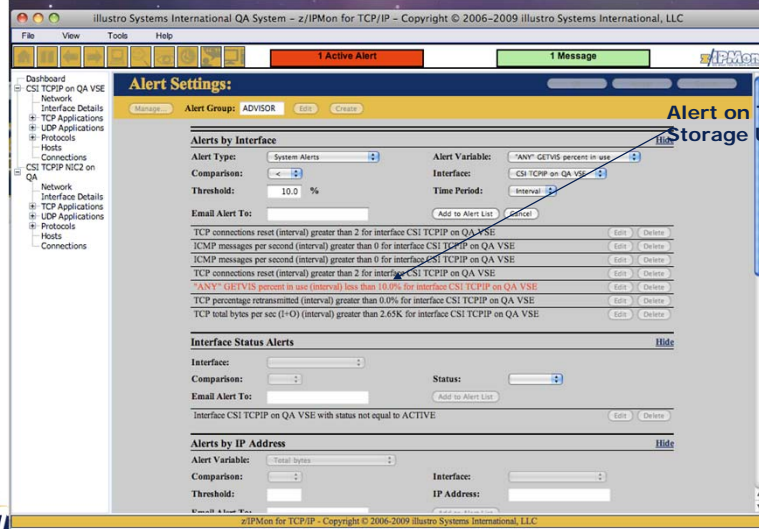
At the bottom of the interface, there's a status bar with the text "z/IPMon for TCP/IP - Copyright © 2006-2009 illustro Systems International, LLC" and a "Return to Dashboard" link.



Release 2.0



Alert on TCP/IP
Storage Usage

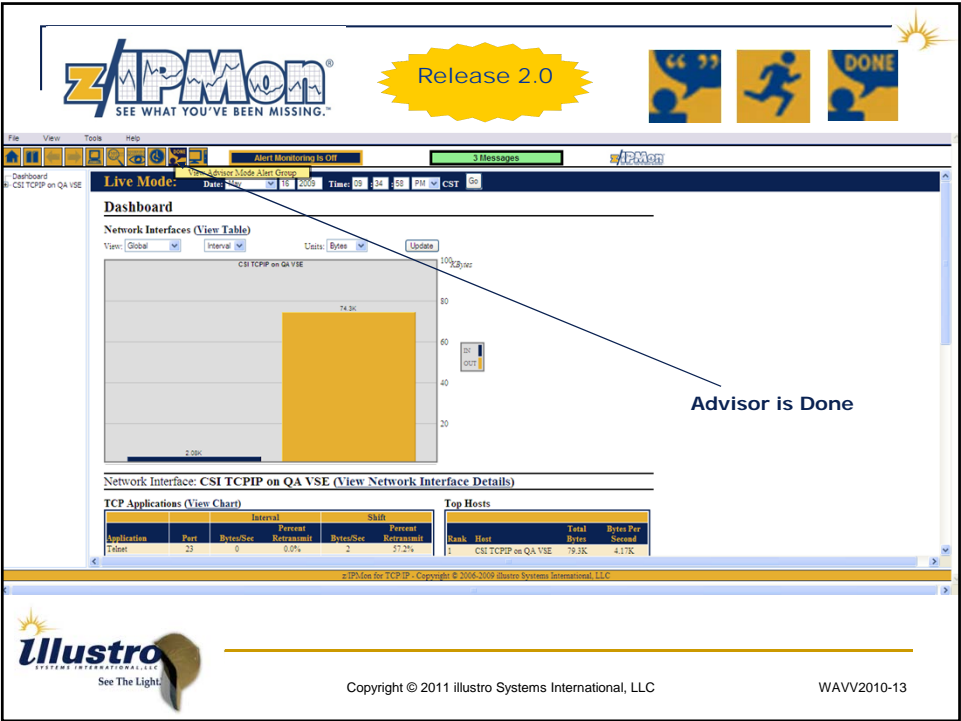


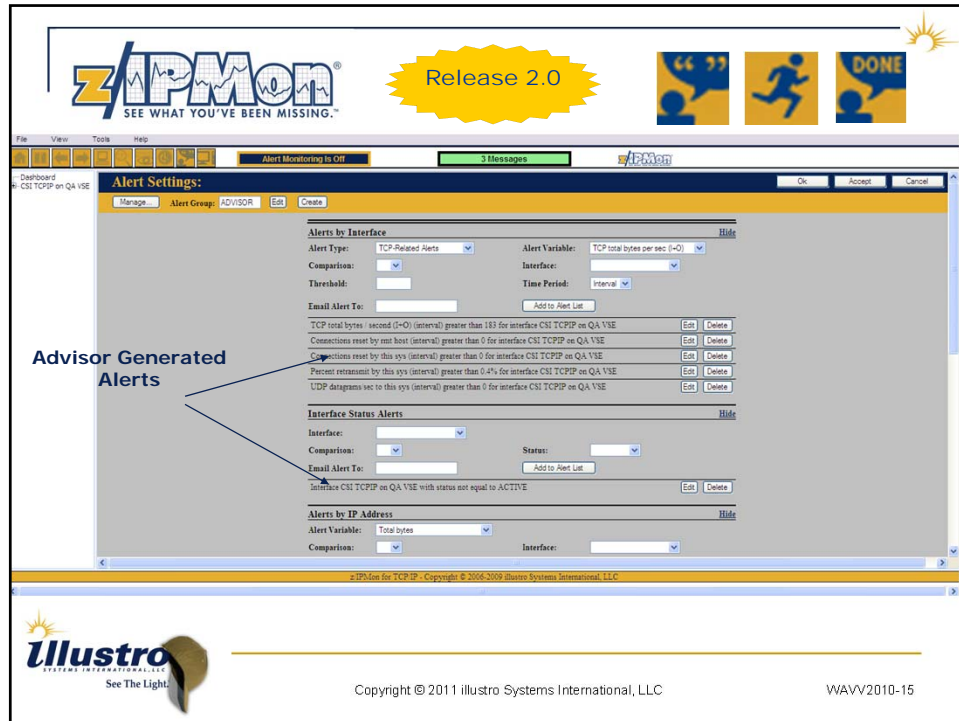
The screenshot shows the "Alert Settings" window in z/IPMon. It features a "Manage" tab and an "Alert Group: ADVISOR" section. The "Alerts by Interface" section is active, showing various alert configurations:

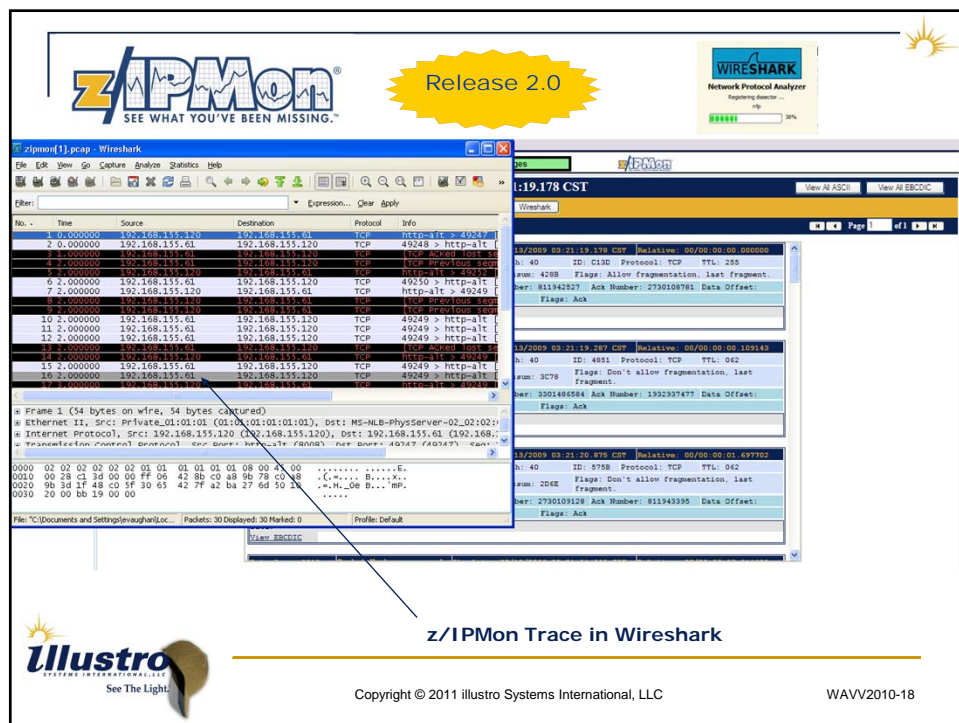
- Alert Type**: System Alerts
- Alert Variable**: "ANY" GETV5 percent in use
- Comparison**: <=
- Threshold**: 10.0 %
- Time Period**: Interval
- Interface**: CSI TCP/IP on QA VSE

Below these settings, there's a list of specific alerts with "Edit" and "Delete" buttons. The "Interface Status Alerts" section is also visible, showing a status alert for the interface.

The bottom of the window includes a status bar with the text "z/IPMon for TCP/IP - Copyright © 2006-2009 illustro Systems International, LLC" and a "See The Light" logo.







New Support – IPV6

- Full support for IBM/BSI's IPv6 solution



Version 2

- IPv4 and IPv6 traffic simultaneously
- Full display of IPv6 data with compressed addresses, e.g. fec0::1:1:1:1:180
- Packet trace support




Copyright © 2011 illustro Systems International, LLC

WAVV2010-19



IPv6 Support



z/IPMon for TCP/IP - Copyright © 2006-2010 illustro Systems International, LLC - Google Chrome

192.168.155.174:8088/zIPMon/HTML

File View Tools Help Alert Monitoring in CDT 4 Messages

Live Mode: Date: October 20 2010 Time: 14:45:00 All CDT On

Dashboard

Network Interfaces (View Chart)

Network Interface	Total		Interval		Shift	
	Bytes	Frames	Bytes/Sec	Frames/Sec	Bytes	Frames
IPv4 stack (IN)	230K	1.79K	0	0	0	0
IPv4 stack (OUT)	729	11	0	0	0	0
IPv6 stack (IN)	0	0	0	0	0	0
IPv6 stack (OUT)	0	0	0	0	0	0

Network Interface: IPv4 stack (View Network Interface Details)

TCP Applications (View Chart)

Application	Port	Interval		Shift	
		Bytes/Sec	Percent Retransmit	Bytes/Sec	Percent Retransmit
Local FTP (Ctrl)	21	0	0.0%	0	0.0%
Local FTP (Data)	20	0	0.0%	0	0.0%
Secure TELNET	23	0	0.0%	0	0.0%
Non-FTP-like	80	0	0.0%	0	0.0%
HTTP	80	0	0.0%	0	0.0%
E-Mail	25	0	0.0%	0	0.0%
Printer printing	315	0	0.0%	0	0.0%
Homebrew App	1234	0	0.0%	0	0.0%
z/IPMon HTTP	8088	411	0.0%	295	6.4%
Unknown	N/A	0	0.0%	0	0.0%


Top Hosts

Rank	Host	Total Bytes	Bytes Per Second
1	192.168.155.54	21.5M	9.22M
2	192.168.155.54	37.5M	9.38M
3	192.168.155.1	360K	140K

Protocols (View Chart)



Protocol	Interval		Shift	
	Bytes/Sec	Bytes/Sec	Bytes/Sec	Bytes/Sec
TCP	11.8K	0	0	0
Udp	0	0	0	0

IPv6 Address

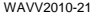




Copyright © 2011 illustro Systems International, LLC

WAVV2010-20



- Current version (GA) Status, Version 1 release 2.0E
- Available for Free Trial at <http://zipmon.com/downloads>
- Log on to a LIVE, running system at <http://zipmon.com/demos>
- Hands-on demo outside at the illustro exhibit



Copyright © 2011 illustro Systems International, LLC WAVV2010-21